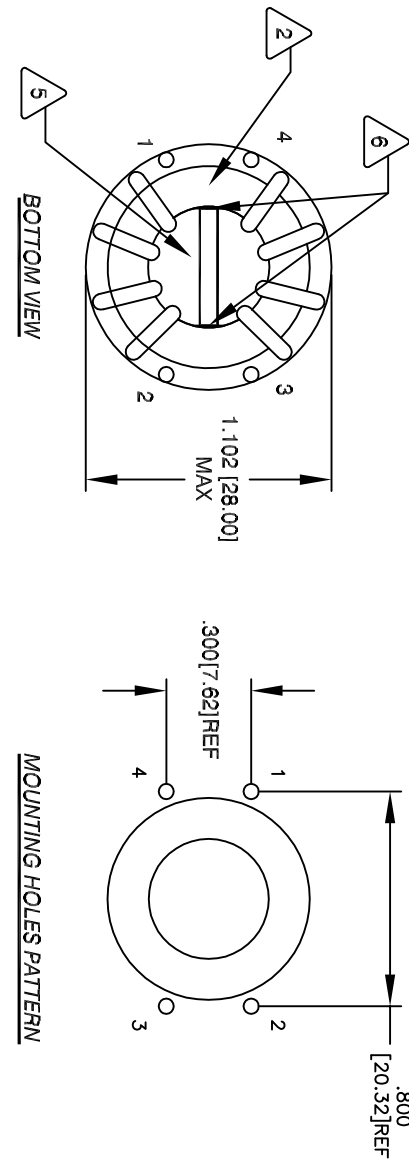
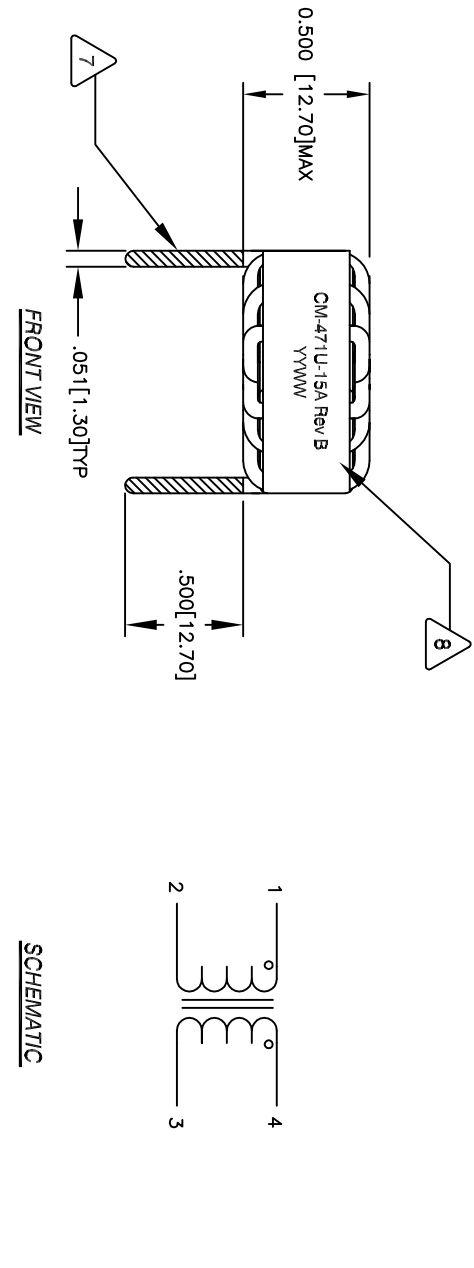


The information contained in this drawing is the sole property of CWS Coil Winding Specialist. Any reproduction in part or whole without written permission of CWS Coil Winding Specialist is prohibited.

REVISION HISTORY			
REV	ECN	DESCRIPTION	SIGN & DATE
BR	DATE	CHK	DATE
A		PRODUCTION RELEASE	RPR 5/17/04 JL 5/17/04
B		REVISED DIMENSIONAL & ELECTRICAL AND BUILD TO ROHS COMPLIANCE	KLC 3/30/09 AK 3/30/09



- 9 BUILD TO ROHS COMPLIANCE AND LEAD-FREE
WHERE SHOWN, USING A PERMANENT MARKING METHOD
MARK PART NUMBER AND REVISION
WRAP INDUCTOR WITH 3M #1350 or EQUAL
- 8 TO THE CORE
MUST REST FLAT ON PCB, LEADS MUST BE TANGENT
FLUSH WITH THE CORE EDGE, AS SHOWN (I.E. COIL
REMOVE INSULATION AND TIN LEADS APPROX. 0.5 INCH
- 7 APPLY EPOXY WHERE SHOWN
- 6 SPACER : TS2.00x13.45x8-5-FR-4 or EQUAL
- 5 WIND BOTH COILS EVENLY SPACED
CONSTRUCTION:
WEIGHT: .16 GRAM
1250 Vrms ISOLATION BETWEEN WINDING
INTER-WINDING CAPACITANCE = 35 pF TYPICAL
LEAKAGE INDUCTANCE ~ 3.3 uH TYPICAL
CURRENT RATING = 15 AMPS
DCR ON EACH WINDING = 4.0 MILLI-OHMS MAX
L = 320 uH Minimum, 10 KHz, 250 mV
SPECIFICATIONS:
- 3
- 2 WIRE: UL RECOGNIZED 180 °C RATED MAGNET WIRE
CWS BYTE-MARK OR OTHER APPROVED PART
CORE: COATED FERRITE TOROID, HIGH PERM MNZN
- 1 RATING CLASS B (130 °C MIN.) REQUIRED
MATERIAL: UL RECOGNIZED 94V-0 FOR FLAMMABILITY

NOTES: UNLESS OTHERWISE SPECIFIED, READ FROM BOTTOM UP.

CODE	IDENT	MFG. P/N	DESCRIPTION	ITEM NO.
PARTS LIST				
AUTOCAD	X	COILS COM, INC		CWS Coil Winding Specialist.
SOLIDWORKS		www.coils.com		353 W Grove Ave Orange, CA 92865
SIGN	DATE			
RPR	5/17/04	TITLE: Common Mode Line Filter		
JL	5/17/04	470 uH, 15 Amp, Horizontal		
ENGR	5/17/04	SIZE	DWG. NO.	REV
JL	5/17/04	B	CM-471U-15A	B
SCALE: 2=1				
SHEET 1 OF 1				

Date: 2/10/2011

Impedance Chart

P/N: CM-471U-15 REV.B

COIL WINDING SPECIALIST, Inc.
353 W. Grove Avenue, Orange, CA
92865
Tel: 714-279-9010
Fax: 714-279-9482
Email: Sale@coilws.com

